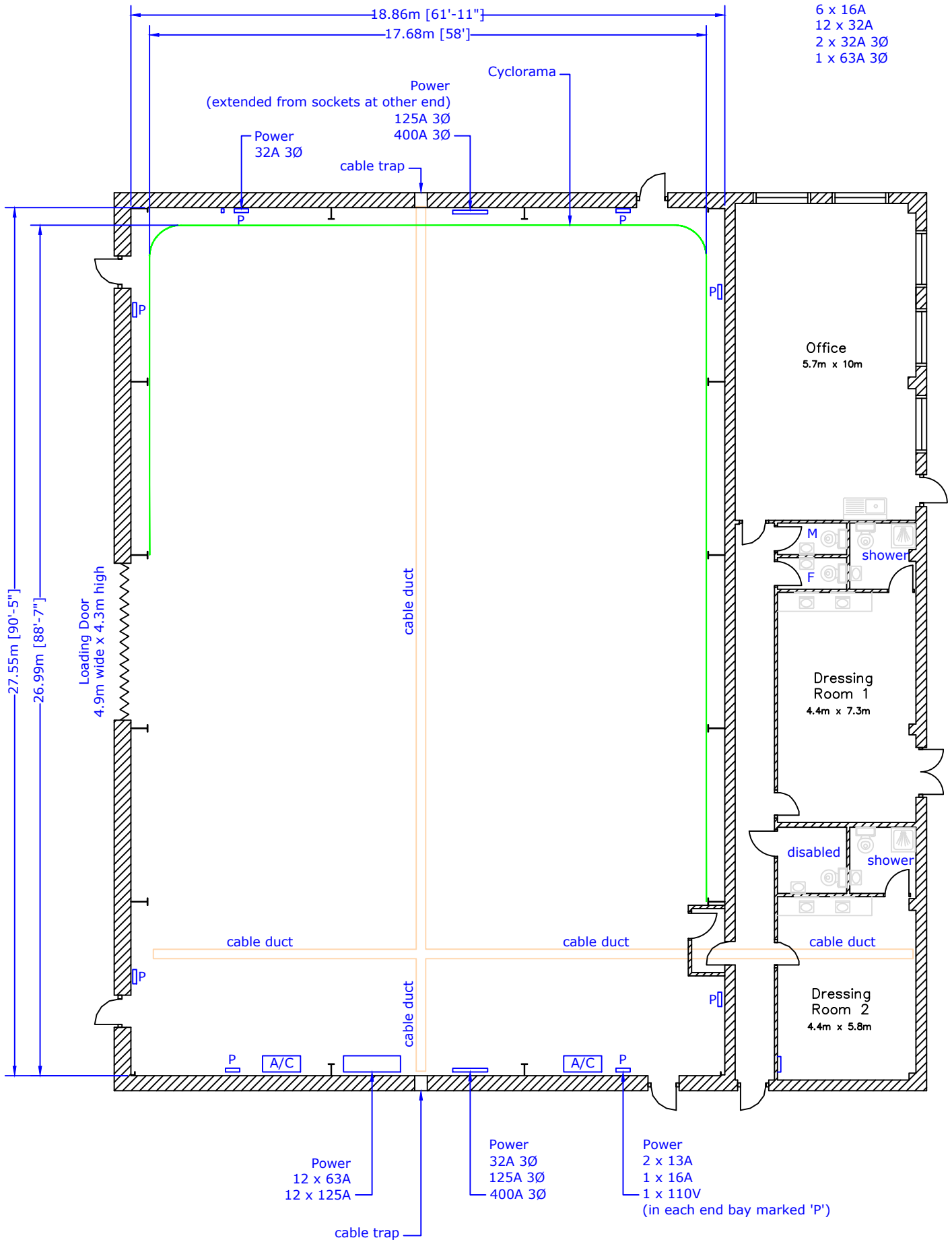
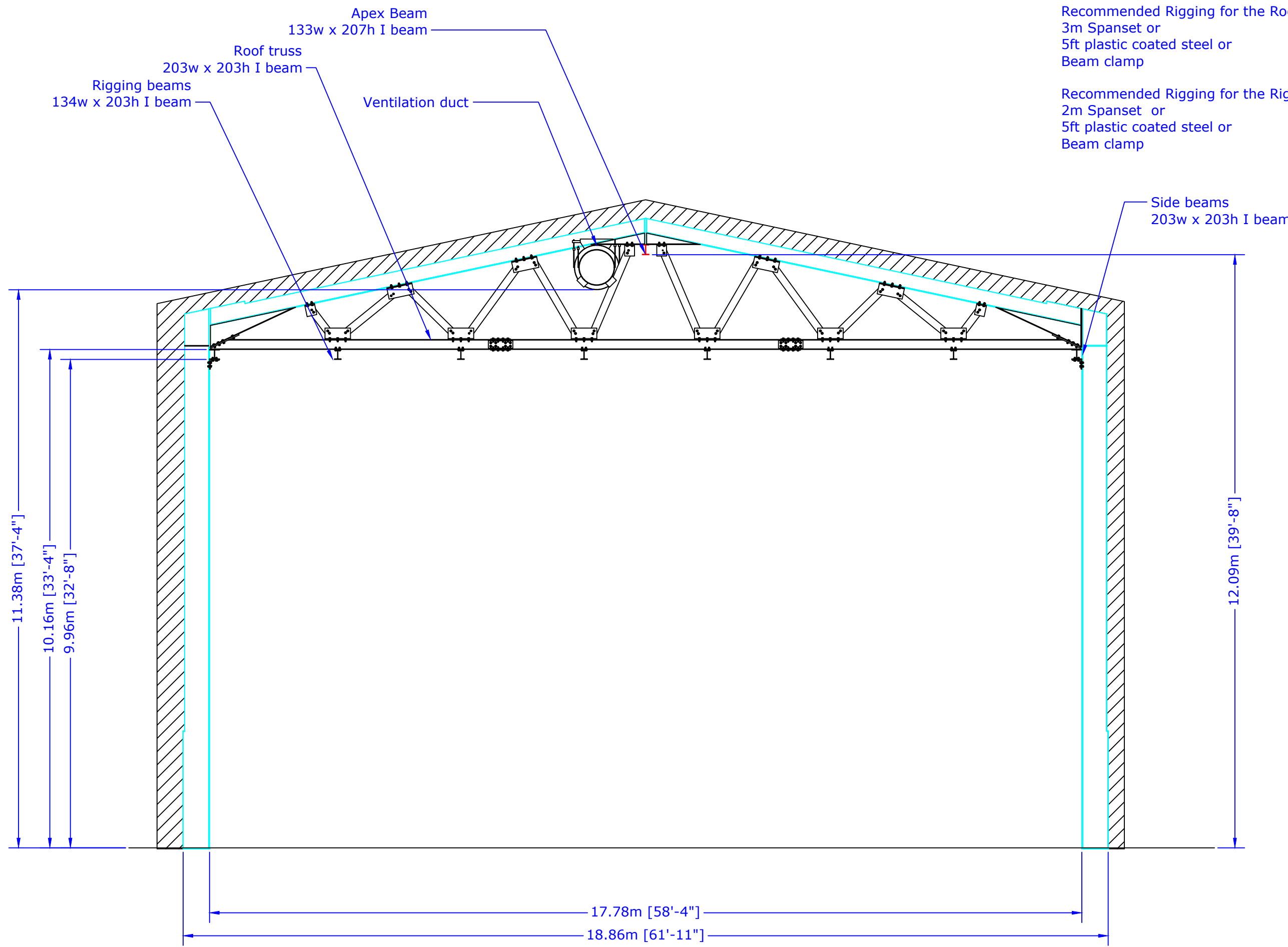



Rubber Distro Box
 125A 3Ø in
 6 x 16A
 12 x 32A
 2 x 32A 3Ø
 1 x 63A 3Ø

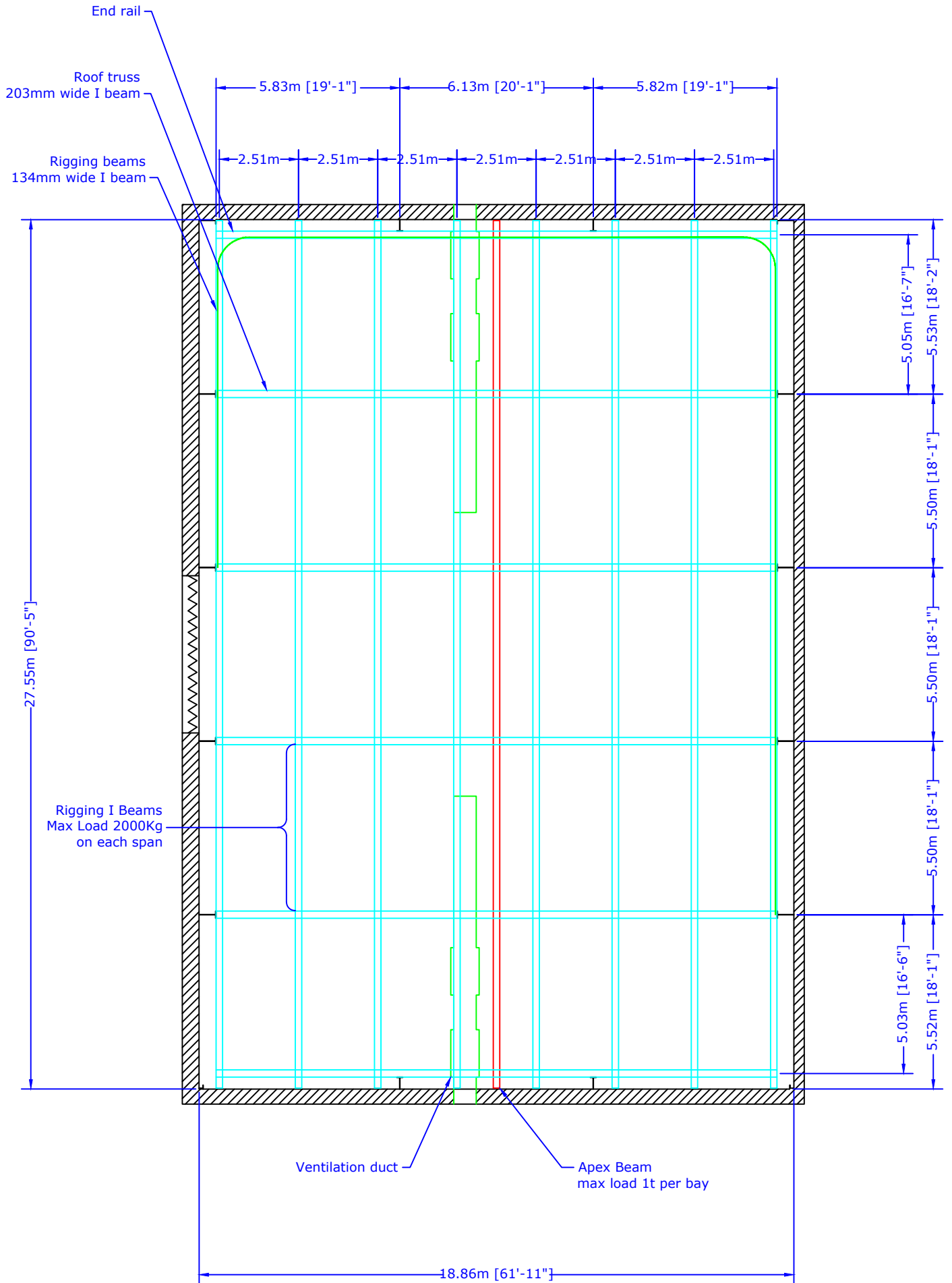


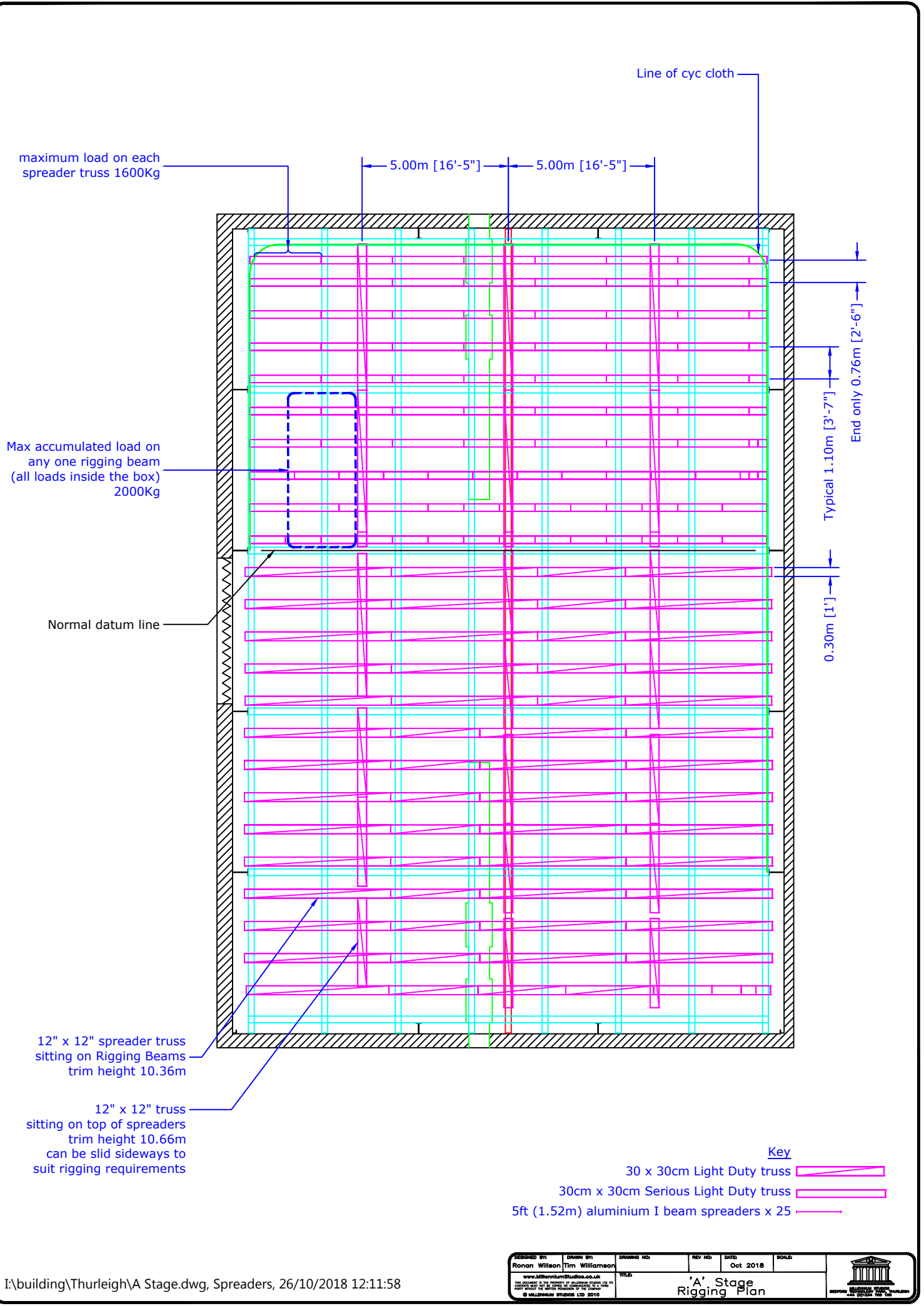


Recommended Rigging for the Roof Truss
3m Spanset or
5ft plastic coated steel or
Beam clamp

Recommended Rigging for the Rigging Beams
2m Spanset or
5ft plastic coated steel or
Beam clamp

DESIGNED BY: Ronan Willson	DRAWN BY: Tim Williamson	DRAWING NO:	REV NO:	DATE: 1/3/16	SCALE:
www.MillenniumStudios.co.uk		TITLE: 'A' Stage Elevation		 MILLENNIUM STUDIOS BEDFORD THURLEIGH PARK, THURLEIGH MK44 0JL TEL: 01294 750 100	





maximum load on each spreader truss 1600Kg

5.00m [16'-5"] 5.00m [16'-5"]

Line of cyc cloth

Max accumulated load on any one rigging beam (all loads inside the box) 2000Kg

Normal datum line

Typical 1.10m [3'-7"]
End only 0.76m [2'-6"]
0.30m [1"]

12" x 12" spreader truss sitting on Rigging Beams trim height 10.36m

12" x 12" truss sitting on top of spreaders trim height 10.66m can be slid sideways to suit rigging requirements

Key

- 30 x 30cm Light Duty truss
- 30cm x 30cm Serious Light Duty truss
- 5ft (1.52m) aluminium I beam spreaders x 25

DESIGNED BY Ronan Wilson	DRAWN BY Tim Williamson	DRAWING NO:	REV NO:	DATE Oct 2018	SCALE:
www.millenniumstudios.co.uk		MILLENNIAL STUDIOS LTD 11		MILLENNIAL STUDIOS LTD 2018	
TITLE 'A' Stage Rigging Plan					

Height of frame: 8030mm (26'4")
 Size of cloth: 48.4m x 7.6m (159ft x 25ft)
 Area of cloth: 369.3m² (3975ft²)

